

Universal Case File Number 174A-DC-5620 1A10645

Field Office Acquiring Evidence Laboratory

Serial # of Originating Document 11078

Date Received 4-7-05

From Laboratory  
(Name of Contributor)

(Address of Contributor)

(City and State)

By

b6  
b7C

To Be Returned  Yes  No

Receipt Given  Yes  No

Grand Jury Material - Disseminate Only Pursuant to Rule 6 (e)  
Federal Rules of Criminal Procedure

Yes  No

Federal Taxpayer Information (FTI)

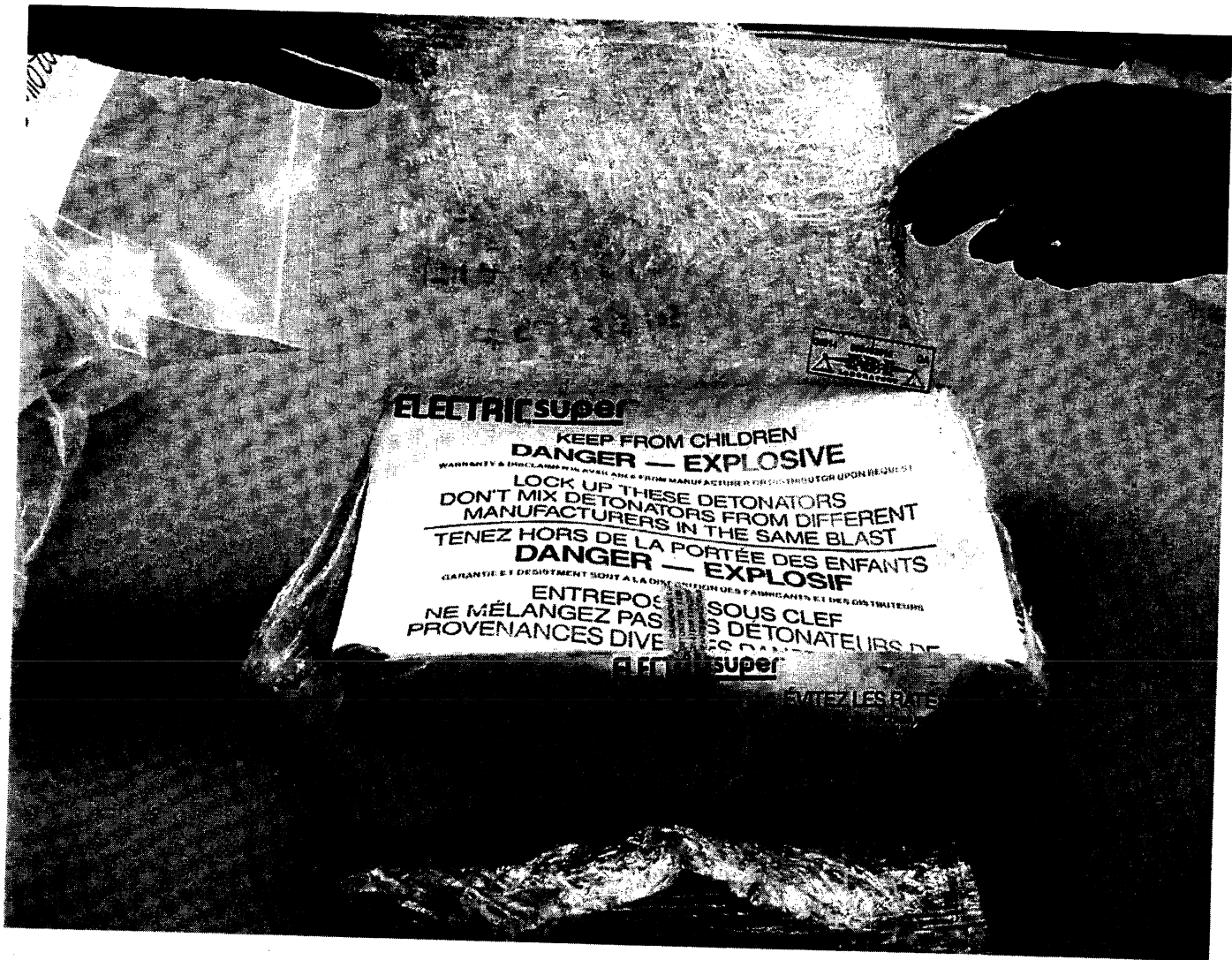
Yes  No

Title: OK Bomb  
major case 117  
OO: Oklahoma City

Reference: EC dated 04-08-2005  
(Communication Enclosing Material)

Description:  Original notes re interview of

Explosive Materials recovered from the former residence  
of Terry Nichols in Herrington, Kansas. (1 Compact Disk)



**ELECTRIC SUPER**

KEEP FROM CHILDREN  
**DANGER — EXPLOSIVE**

WARRANTY & DISCLAIMER: THIS BAG IS FROM MANUFACTURER OF DETONATOR UPON REQUEST

**LOCK UP THESE DETONATORS  
DON'T MIX DETONATORS  
MANUFACTURERS FROM DIFFERENT**

**TENEZ HORS DE LA PORTÉE DES ENFANTS  
DANGER — EXPLOSIF**

GARANTIE ET DÉSIGNATION SONT À LA DISPOSITION DES FABRICANTS ET DES CONSTRUCTEURS

**ENTREPOSEZ SOUS CLEF  
NE MÉLANGEZ PAS LES DÉTONATEURS DE  
PROVENANCES DIFFÉRENTES**

**ELECTRIC SUPER**

ÉVITEZ LES RATS

**ELECTRIC super**



KEEP FROM CHILDREN

**DANGER — EXPLOSIVE**

WARRANTY & DISCLAIMERS AVAILABLE FROM MANUFACTURER OR DISTRIBUTOR UPON REQUEST

LOCK UP THESE DETONATORS  
DON'T MIX DETONATORS FROM DIFFERENT  
MANUFACTURERS IN THE SAME BLAST

TENEZ HORS DE LA PORTÉE DES ENFANTS  
**DANGER — EXPLOSIF**

GARANTEE ET DÉBETEMENT SONT À LA DISPOSITION DES FABRICANTS ET DES DISTRIBUTEURS

ENTREPO  
NE MÉLANGEZ PAS  
PROVENANCES

SOUS CLEF  
DES DÉTONATEURS

**ELECTRIC super**

ÉVITEZ LES RATÉS

RECONNUES POUR

**ELECTRICsuper**

KEEP FROM CHILDREN

**DANGER — EXPLOSIVE**

WARRANTY & DISCLAIMER IS AVAILABLE FROM MANUFACTURER OR DISTRIBUTOR UPON REQUEST.

LOCK UP THESE DETONATORS  
DON'T MIX DETONATORS FROM DIFFERENT  
MANUFACTURERS IN THE SAME BLAST

TENEZ HORS D'ACCESS À LA PORTÉE DES ENFANTS

**DANGER — EXPLOSIF**

GARANTIE ET DÉCLARATION SONT DISPONIBLES À LA DEMANDE DU FABRICANT ET DES DISTRIBUTEURS

ENTRETIENEZ-LES SOUS CLEF  
NE MÉLANGEZ PAS LES DÉTONATEURS

**ELECTRICsuper**

ÉVITEZ LES RATÉS

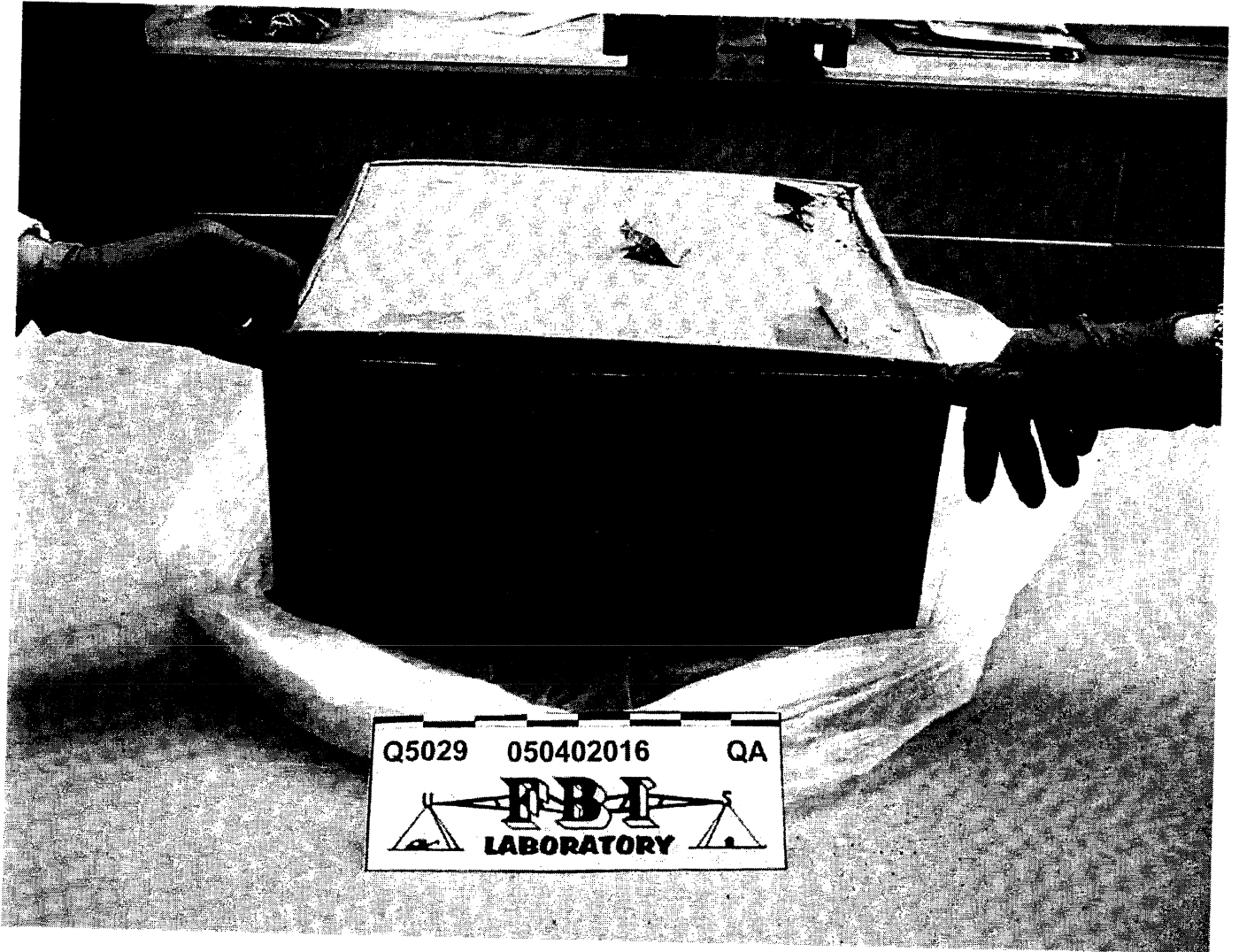


ELECTRICsuper



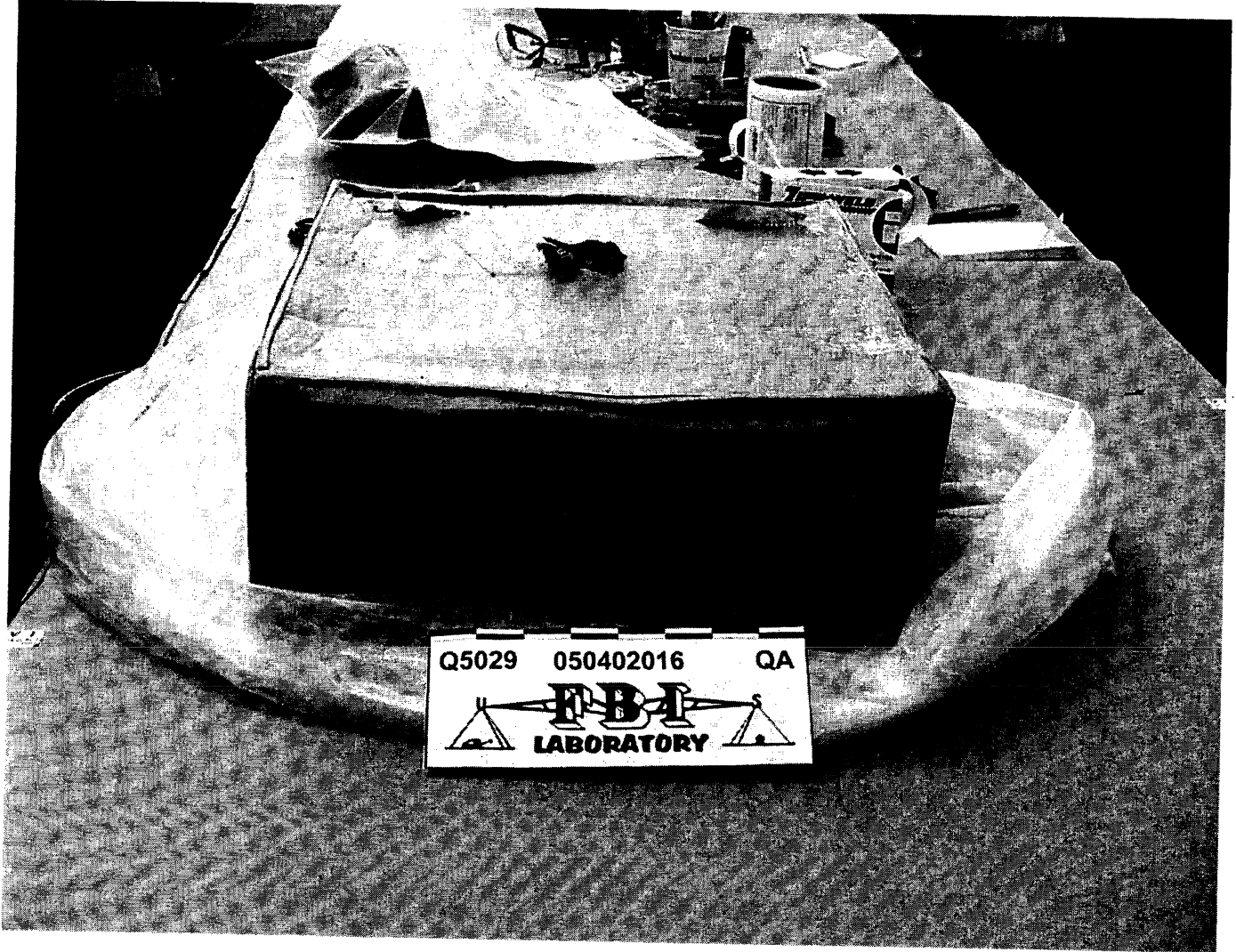
Q5029 050402016 QA





Q5029 050402016 QA





Q5029 050402016 QA



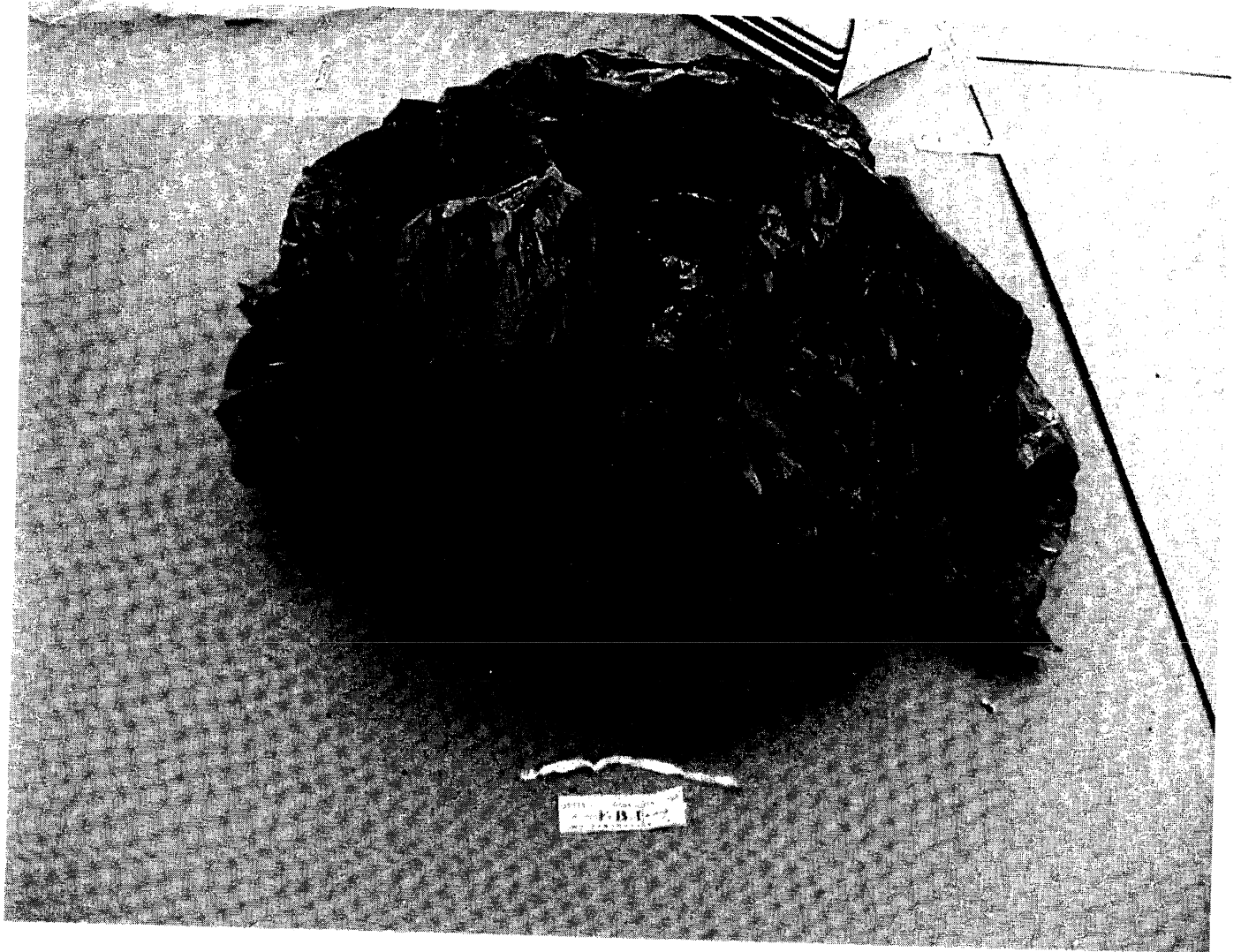


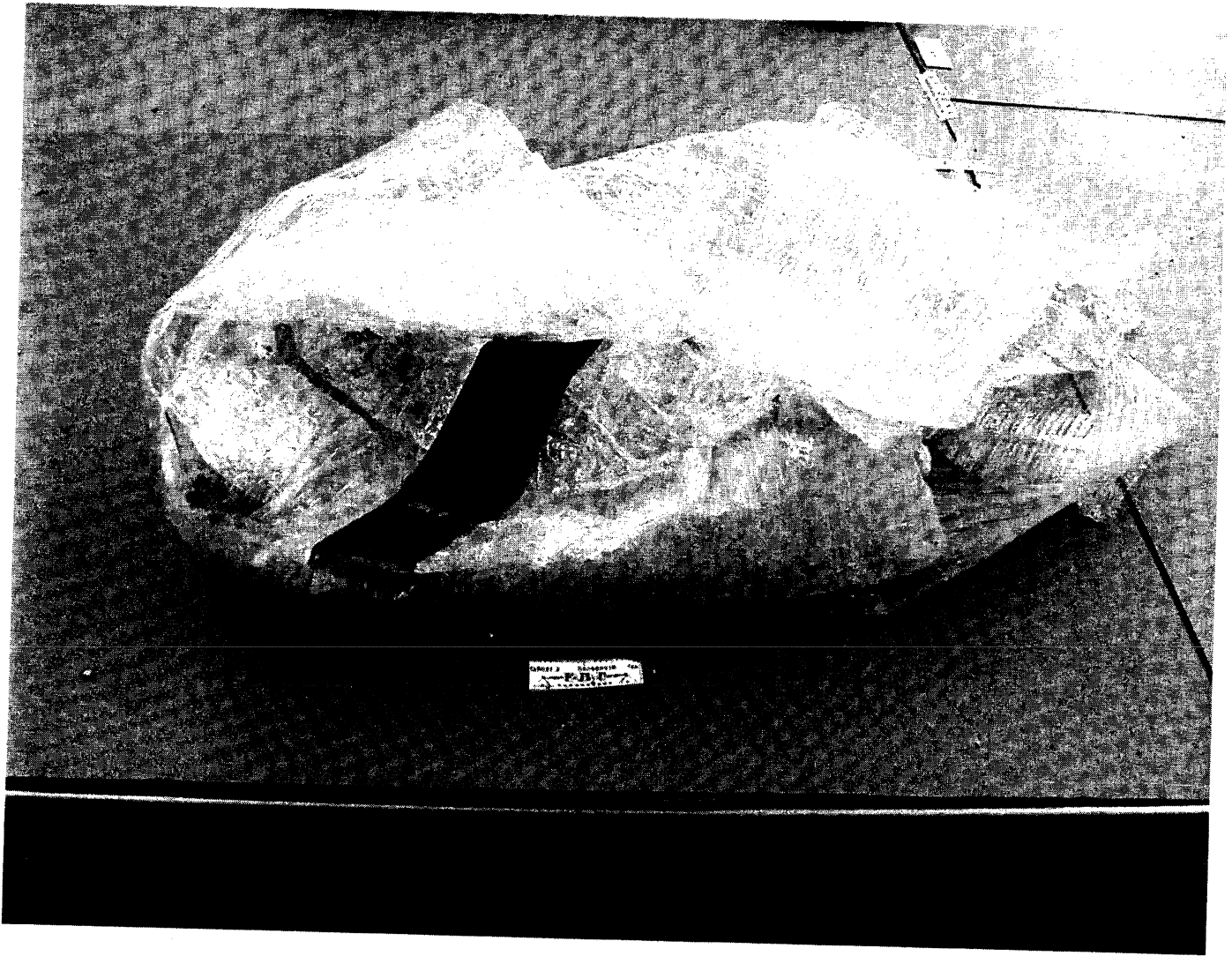
Q5029 050402016 QA  
FBI  
LABORATORY

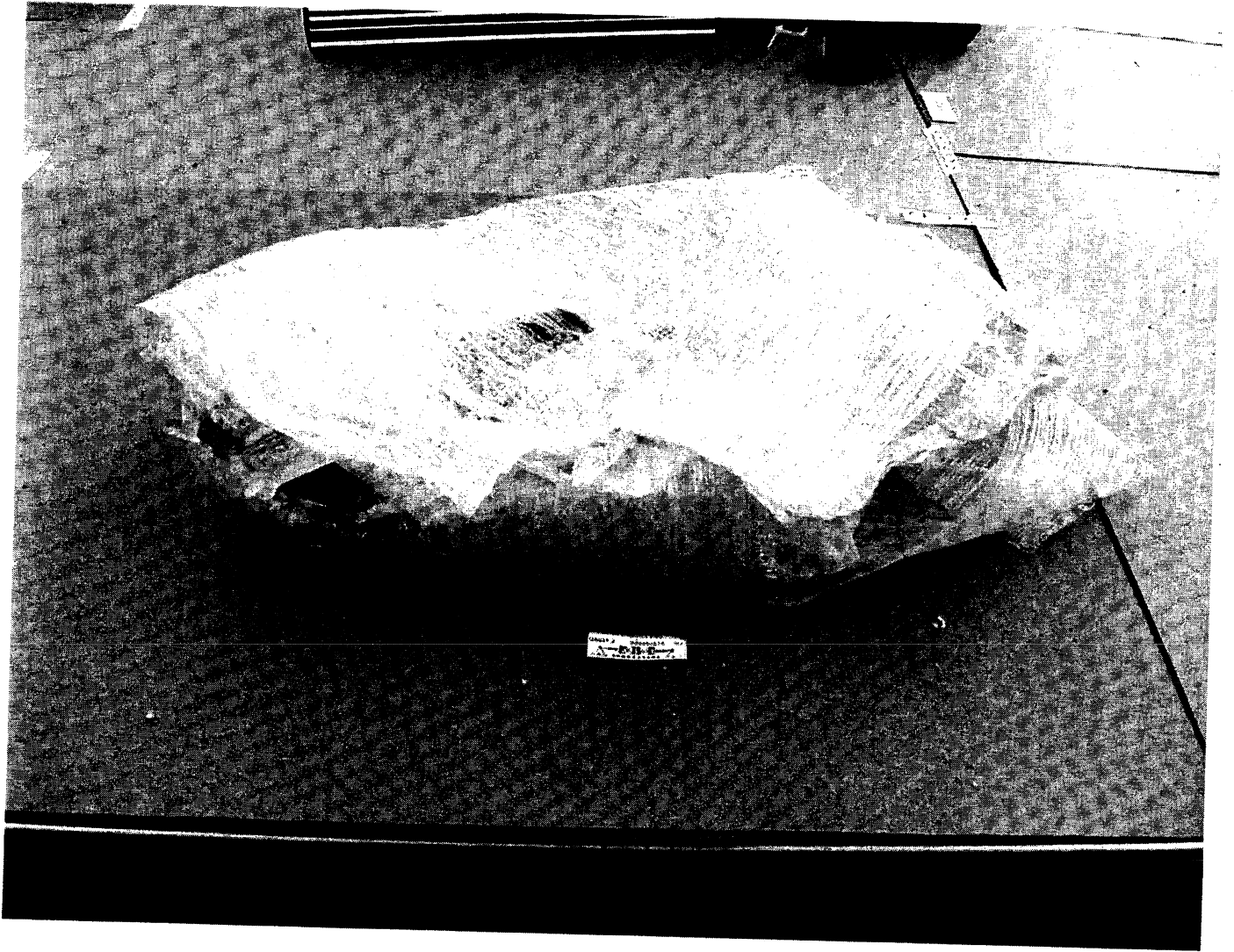




Q5029 050402016 QA  
FBI  
LABORATORY






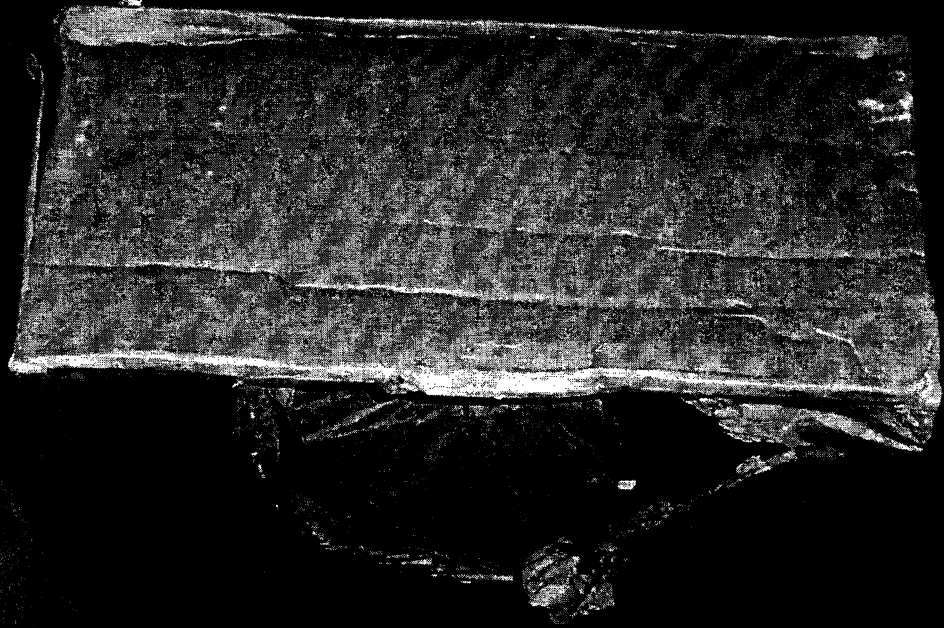




Q5031.4  
050402016



Q5031.4 050402016 QA  
  
LABORATORY



Q5031.4 050402016 QA



Q5031.4

REPORTANT

DO NOT RETURN TO THE  
REPORTING OFFICE  
PLEASE YOUR COPIES TO THE

<input type="checkbox"/>	L6-20 (8820)
<input type="checkbox"/>	LT6-90 (8830)
<input type="checkbox"/>	AL6-18
<input type="checkbox"/>	AL6-18
<input type="checkbox"/>	AL6-18
<input type="checkbox"/>	AL6-18
<input type="checkbox"/>	AL6-18

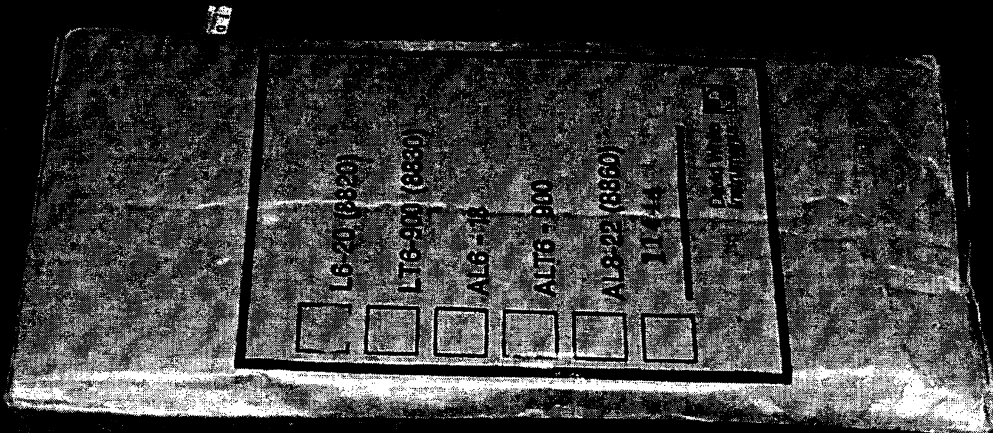


Q5031.4 050402016 QA

**FBI**  
LABORATORY

PCF ECE

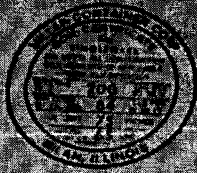




Q5031.4 050402016 QA  
**FBI**  
LABORATORY

Q5031.4

10/2



14 7/8 X 6 1/4 X 1 1/4

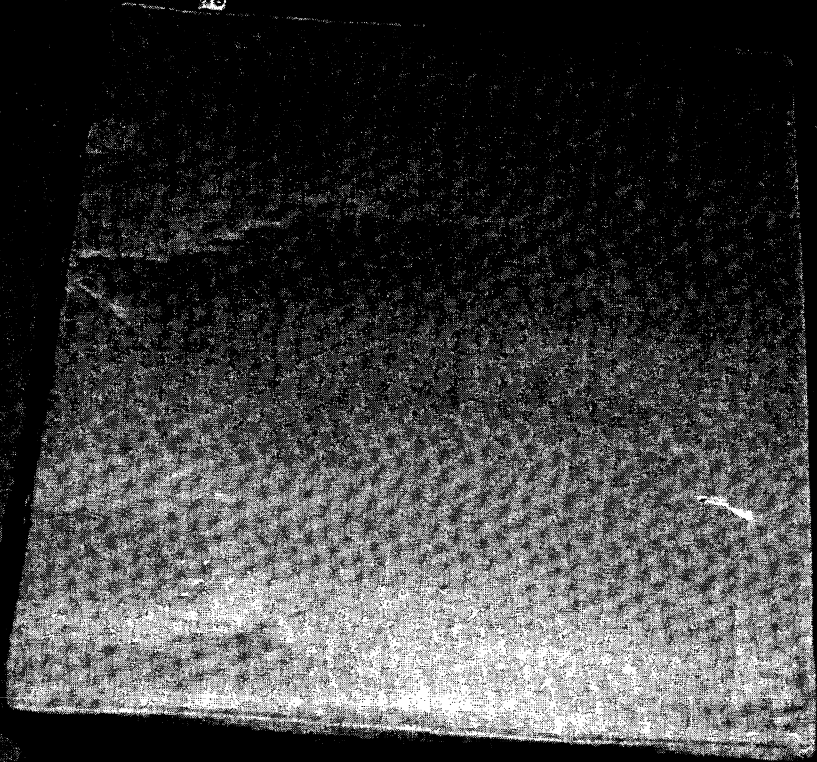
CR028


Q5031.4 050402016 QA



10/2

76

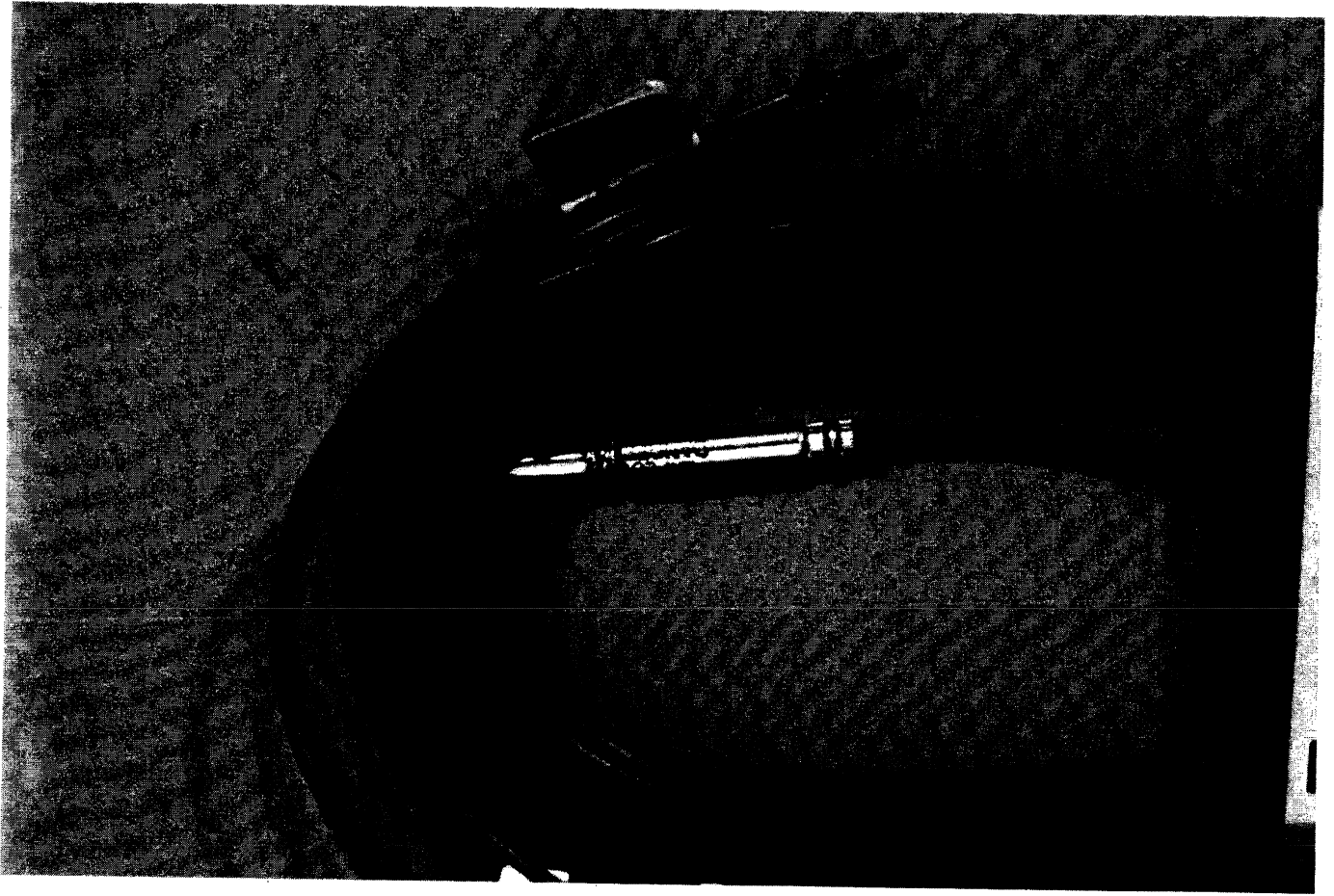


Q5031.4 050402016 QA  
  
LABORATORY

Q5031.4









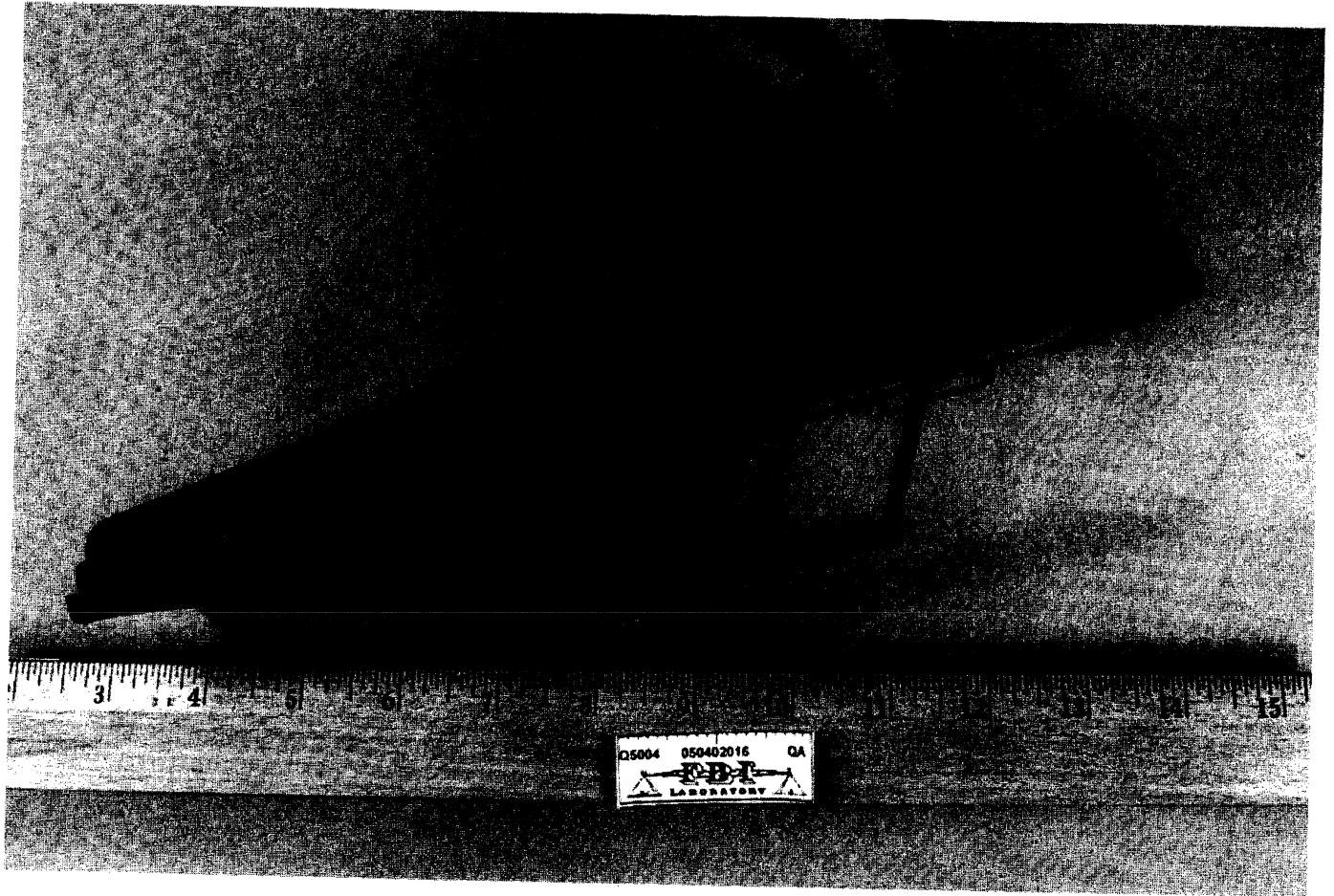


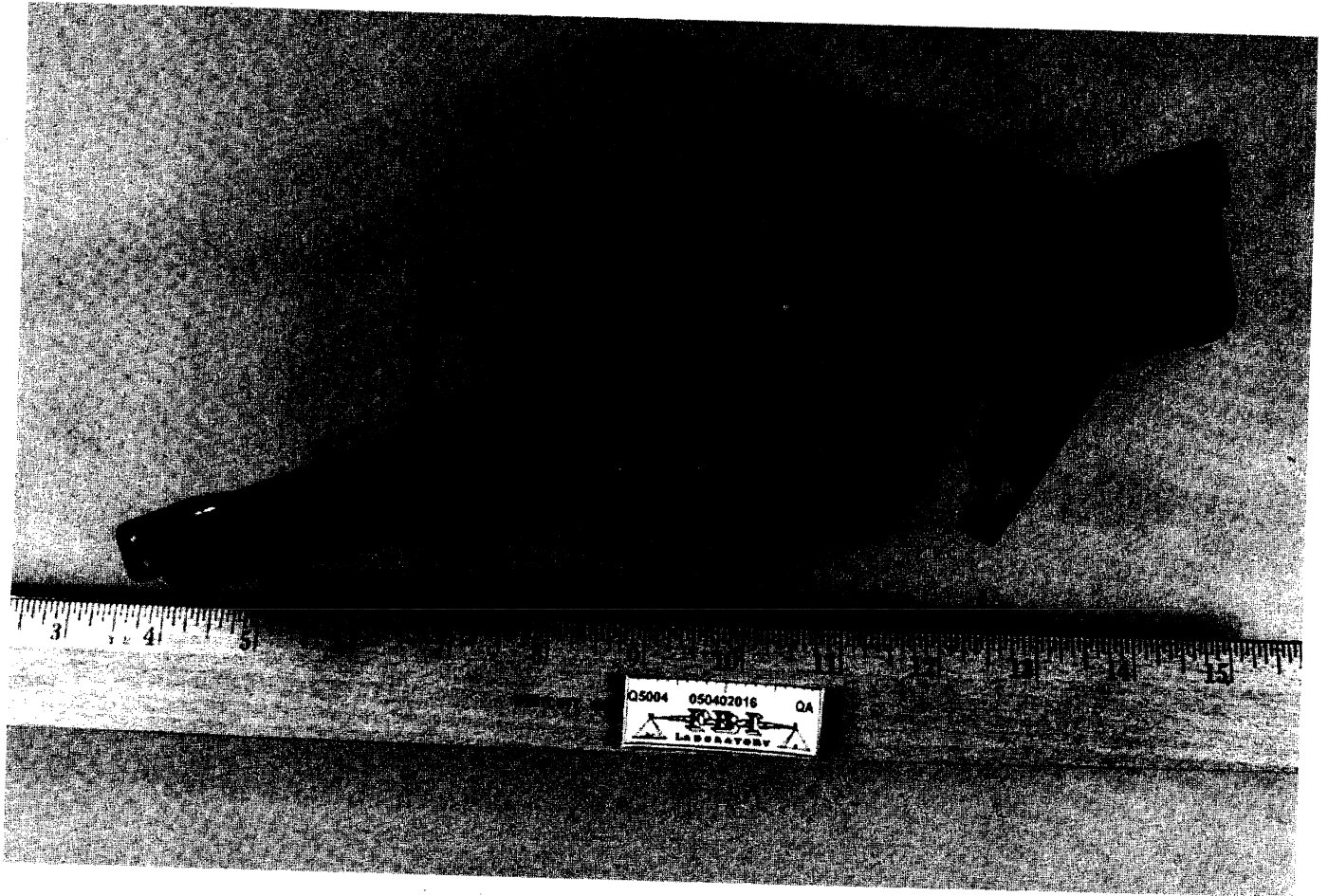
WESTCOTT

Q5004 050402016 GA

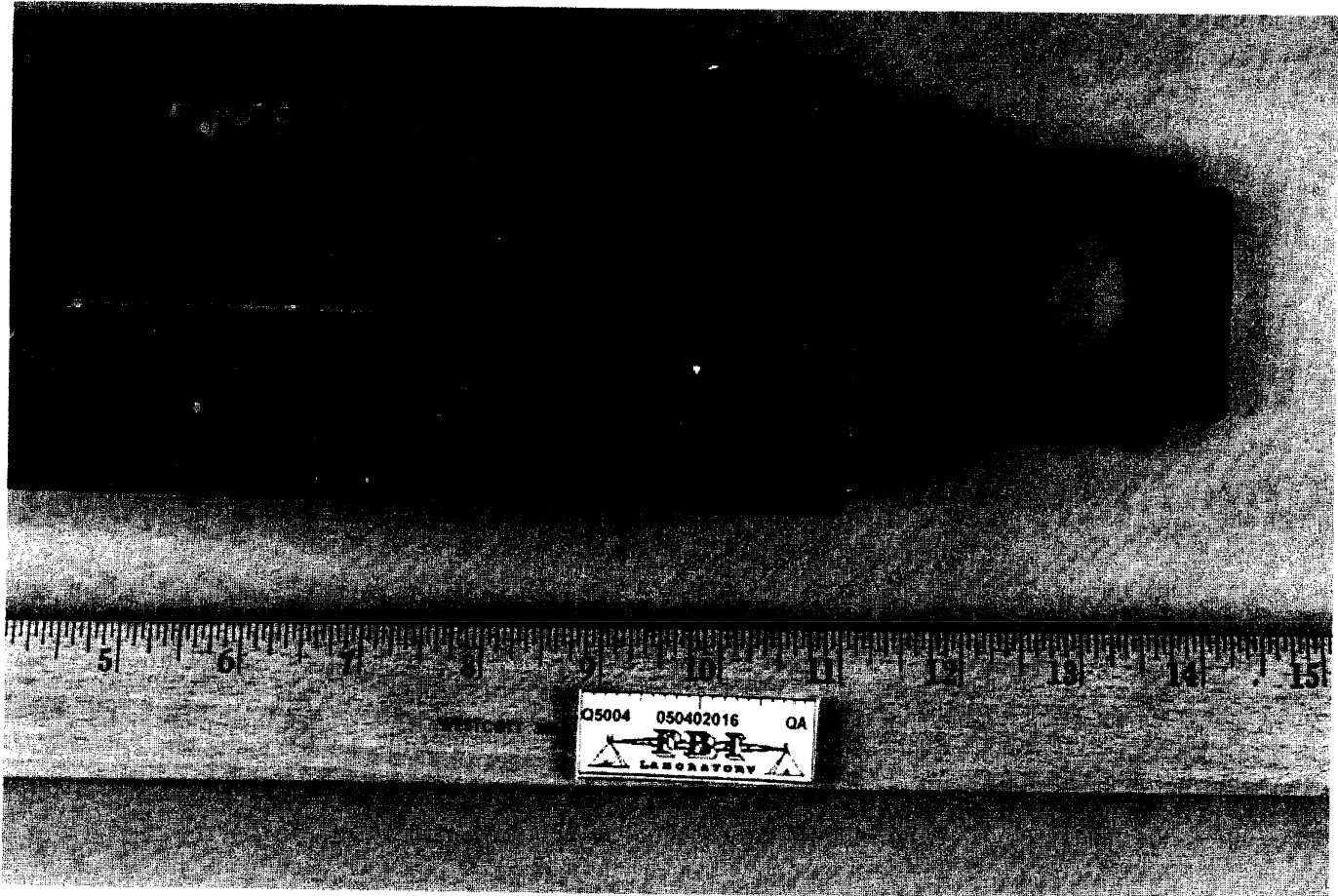




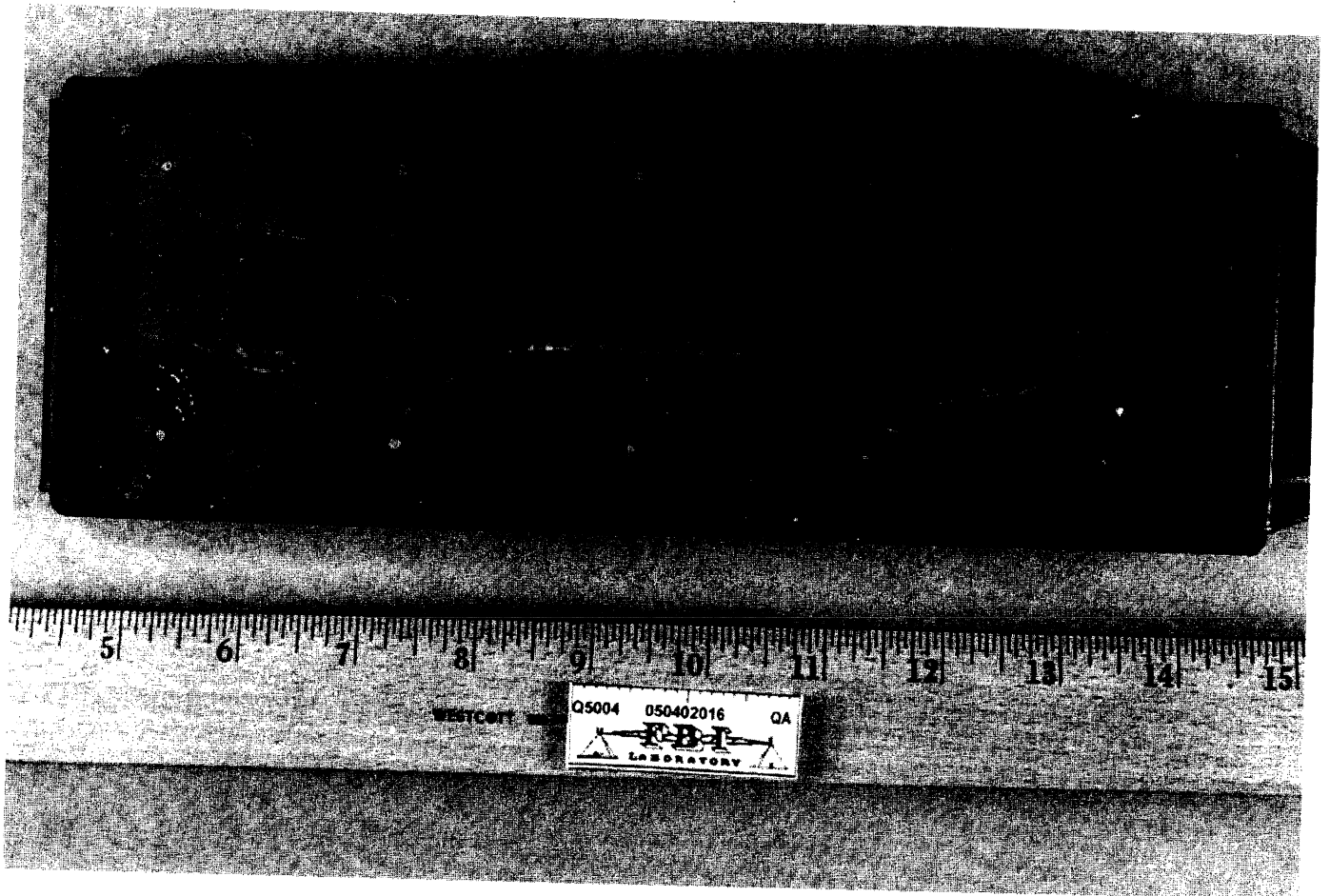




Q5004 050402016 QA  
LABORATORY

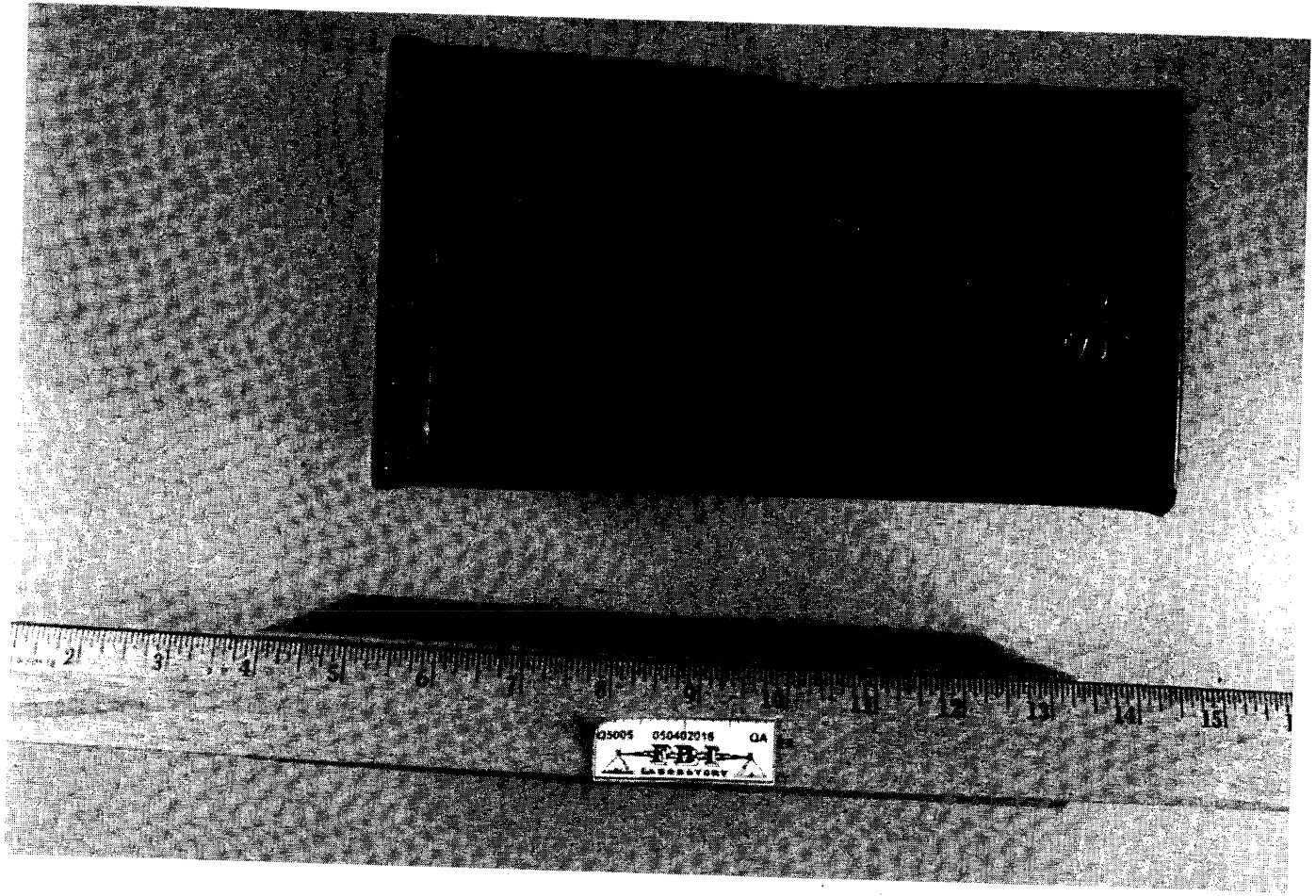


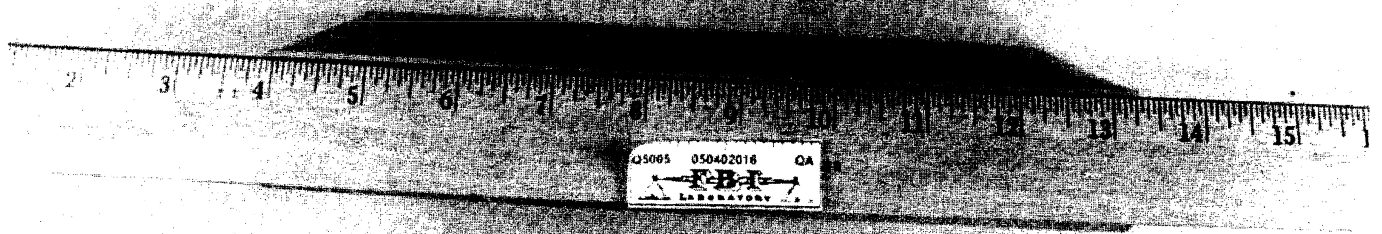
Q5004 050402016 QA  
FBI  
LABORATORY



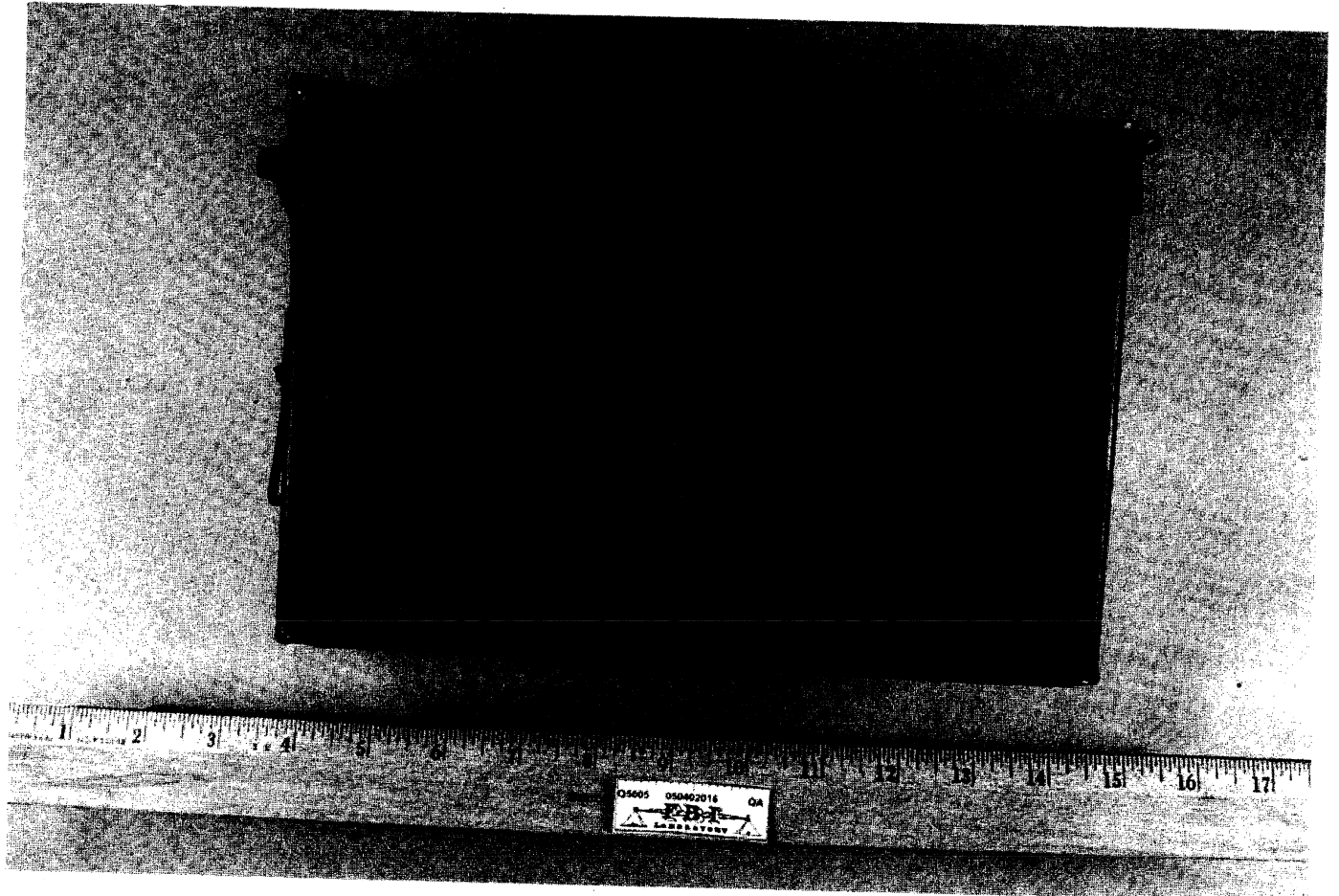
WESTCOTT

Q5004 050402016 QA  
**FBI**  
LABORATORY





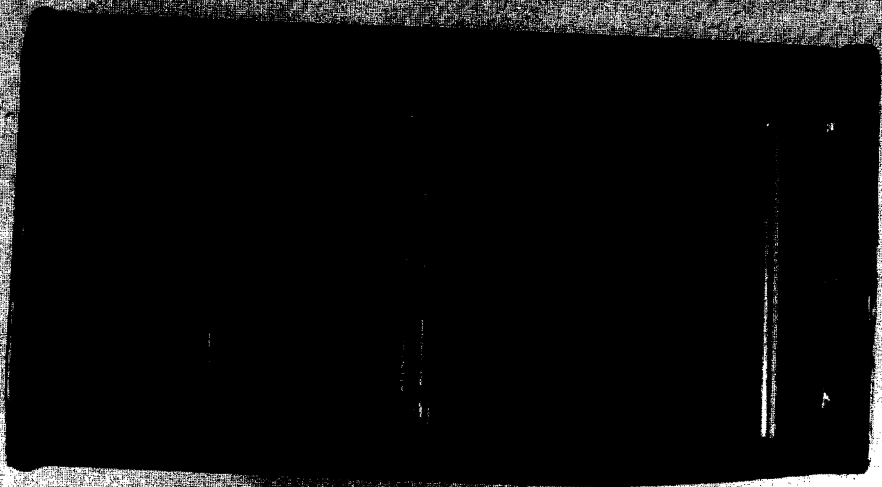
Q5065 050402016 QA  
FBI  
LABORATORY





05005 050402016 QA  
**Q&A**  
LABORATORY





Q5005 050402018 QA  
**FBI**  
LABORATORY